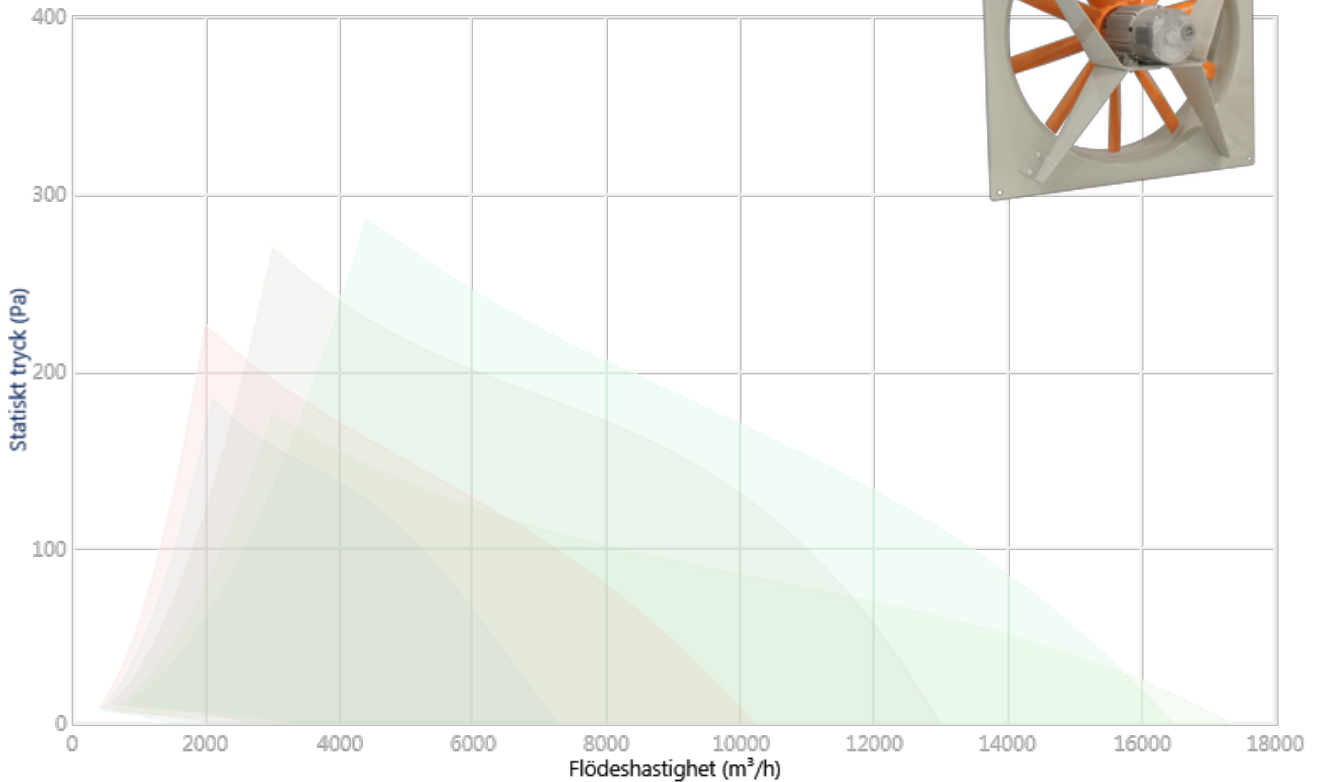


HC/EC Vägghonterade axialfläktar med EC Teknologi IE5-motor

KARAKTÄRISTISK KURVA VID +20°C 1,2KG/M³

Dimensionerande Punkt

Q (m ³ /h)	-
Ps (Pa)	-



Num.	Modell	Varvtal (rpm)	Max. tillåten ström (A)	Kraft (kW) [*]	Ljudeffektnivå dB (A) [**]	Ungefärlig vikt (kg)	Flödes hastighet (m ³ /h)	Tryck (Pa)
MODELLER MED FAST VINKEL / RPM OCH MOTOR (5 MODELLER)								
1	HC/EC-45-4M-0.5 IE5	0	3,5	0,37		14	-	-
2	HC/EC-50-4M-0.75 IE5	0	5	0,55		18	-	-
3	HC/EC-56-4M-1.5 IE5	0	9	1,1		28	-	-
4	HC/EC-63-4M-1.5 IE5	0	9	1,1		30	-	-
5	HC/EC-71-6M-1 IE5	0	6	0,66		39	-	-

[*] Nominell mekanisk effekt förutom värden med * som är Max. Elektrisk kraft

[**] Akustiska värden beräknade för arbetspunkten



INDEX

1) HC/EC-45-4M-0.5 IE5	3
2) HC/EC-50-4M-0.75 IE5	6
3) HC/EC-56-4M-1.5 IE5	9
4) HC/EC-63-4M-1.5 IE5	12
5) HC/EC-71-6M-1 IE5	15

HC/EC-45-4M-0.5 IE5



Väggmonterade axialfläktar med EC Teknologi IE5-motor

Wall mounted axial fans with EC Technology IE5 motor with integrated electronics, specially designed for high energy efficiency.



Fan:

- Airflow direction from motor to impeller.
- Fibreglass reinforced polyamide-6 impeller.
- Steel sheet support frame.
- Protection grid against contacts according to UNE-EN ISO 12499.
- Model 71 the protection grid is supplied as an accessory.



Motor:

- High efficiency EC Technology motors with integrated electronics, regulated by 0-10V or 4-20mA.
- IE5 efficiency motors, class F and IP55 protection.
- Single-phase 230 V 50/60 Hz.
- Working temperature: -20 °C +60 °C.

EC CONTROL:

Supplied as an optional accessory. Control panel for ventilation systems with EC Technology motors that have electronics incorporated in the motor itself. With the following characteristics:

- CPC: Constant pressure control.
- CFC: Constant flow control.
- DAY / NIGHT: Double pressure setpoint adjustment according to time of day.
- External sensor: compatible with temperature, humidity, air quality or CO sensor.
- Equipment preconfigured in constant pressure mode with 100 Pa setpoint.

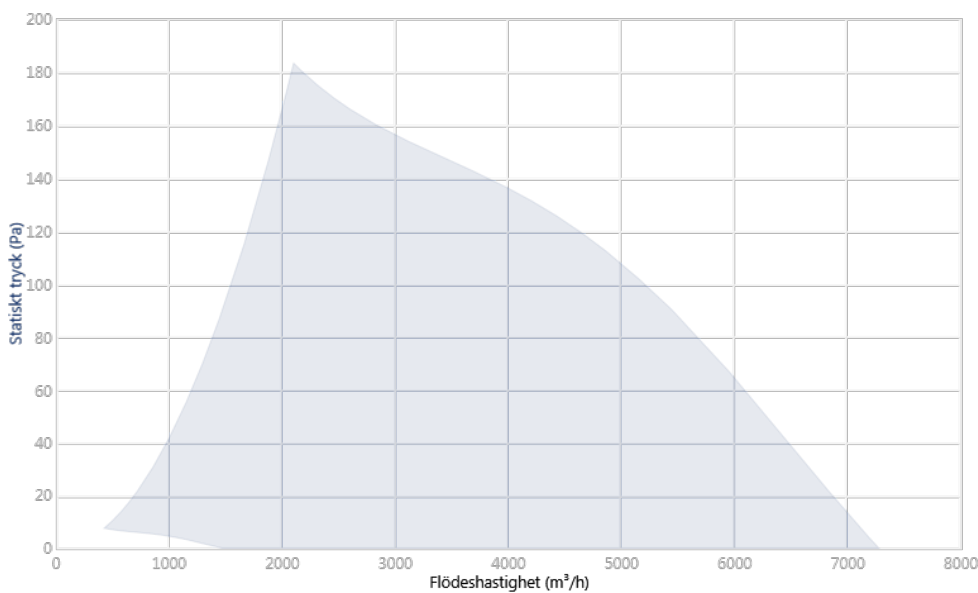
Finishing:

- Anti-corrosive finish in polyester resin, polymerised at 190 °C, after degreasing with phosphate-free nanotechnology treatment.

On request:

- Airflow direction from impeller to motor.
- Motor, impeller and grille assembly (version F), except model 71 supplied without grill.
- Motor, impeller assembly, version G.

KARAKTÄRISTISK KURVA OCH AKUSTIK VID 1,2KG/M³

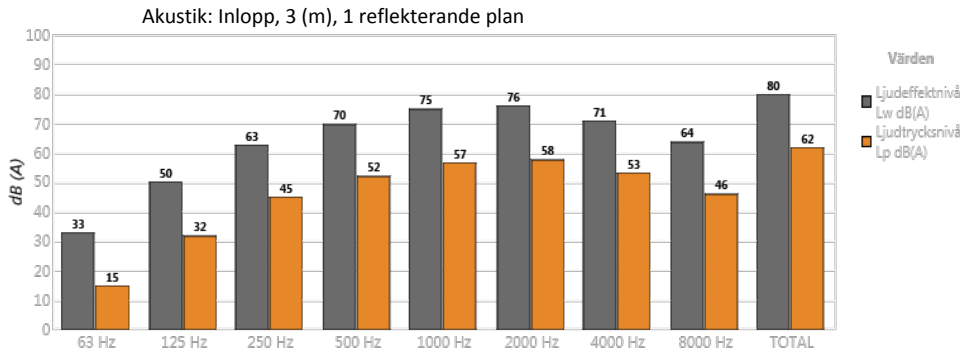


Dimensionerande Punkt

Q (m³/h)	
Ps (Pa)	

Servicepunkt (SP)

Q (m³/h)	-
Ps (Pa)	-
Pd (Pa)	-
Pt (Pa)	-



Band	Lw dB (A)	Lp dB (A)
63 Hz	33	15
125 Hz	50	32
250 Hz	63	45
500 Hz	70	52
1000 Hz	75	57
2000 Hz	76	58
4000 Hz	71	53
8000 Hz	64	46
TOTAL	80	62

TEKNISKA EGENSKAPER

Luftflöde maximalt (m ³ /h)	7276
Varvtal (rpm)	1410
Maximalt statiskt tryck (Pa)	183,1
Maximalt totaltryck (Pa)	190,5

ERP

Effektivitet	42,9%
Effektivitetsklass N	58,1
Mätkategori	A
Effektivitetskategori	Statisk
Specifikt förhållande	1,00
Flödes hastighet (m ³ /h)	4282

Tryck (Pa)	129
Ingångseffekt (kW)	0,358
Varvtal (rpm)	1410
Frekvensomvandlare	VSD inbyggd i fläkten
ErP-efterlevnad	In accordance with the ErP 2020 draft

- Uppgifter som fastställts vid optimal effektivitet

MOTORDATA

Max. Elektrisk kraft (kW)	0,37
Hz / faser	50/1
Motor VSD Max. (rpm)	1410
Motor VSD Min. (rpm)	285
Stolpar	4P
Max. ström (A) 220-277 V	3,5
Motorskydd	IP55

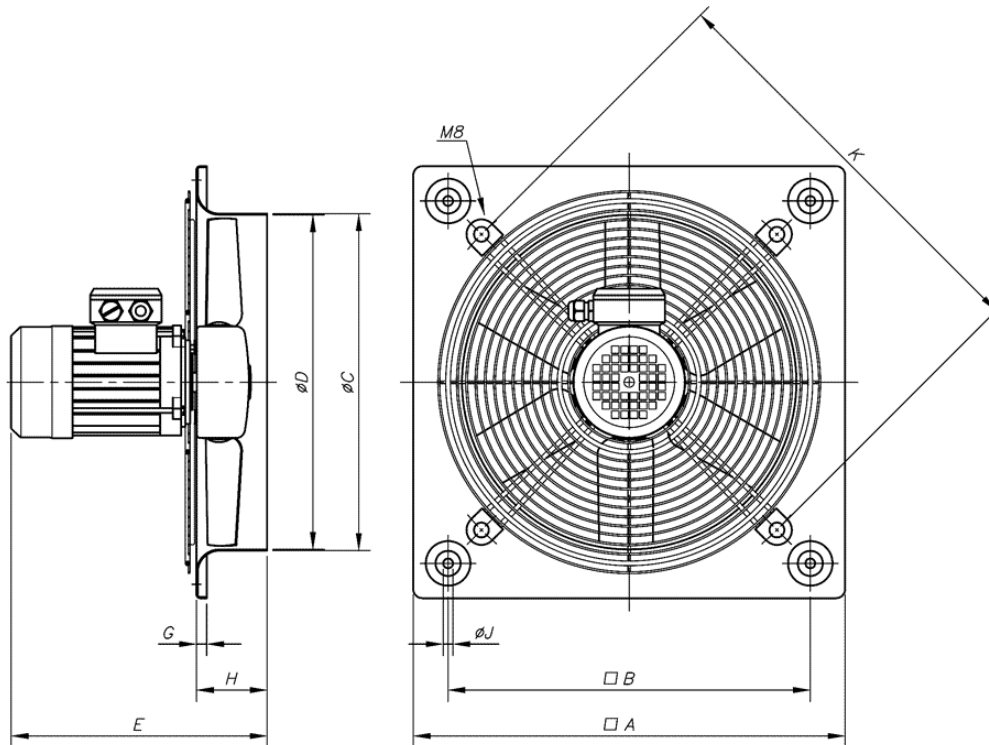
Data kan ändras, kontrollera motorplåten

MÅTT

A	B	ØC	ØD	E	G	H	ØJ	K
596	504	462,5	460	322,5	11	105	10,5	560

Mått utan uttryckligen definierade enheter visas i millimeter (mm). Mått beroende på motor är ungefärliga

Ungefärlig vikt (kg)	14
----------------------	----



TILLGÄNGLIGA TILLBEHÖR

Inga tillgängliga tillbehör.

HC/EC-50-4M-0.75 IE5



Väggmonterade axialfläktar med EC Teknologi IE5-motor

Wall mounted axial fans with EC Technology IE5 motor with integrated electronics, specially designed for high energy efficiency.



Fan:

- Airflow direction from motor to impeller.
- Fibreglass reinforced polyamide-6 impeller.
- Steel sheet support frame.
- Protection grid against contacts according to UNE-EN ISO 12499.
- Model 71 the protection grid is supplied as an accessory.



Motor:

- High efficiency EC Technology motors with integrated electronics, regulated by 0-10V or 4-20mA.
- IE5 efficiency motors, class F and IP55 protection.
- Single-phase 230 V 50/60 Hz.
- Working temperature: -20 °C +60 °C.

EC CONTROL:

Supplied as an optional accessory. Control panel for ventilation systems with EC Technology motors that have electronics incorporated in the motor itself. With the following characteristics:

- CPC: Constant pressure control.
- CFC: Constant flow control.
- DAY / NIGHT: Double pressure setpoint adjustment according to time of day.
- External sensor: compatible with temperature, humidity, air quality or CO sensor.
- Equipment preconfigured in constant pressure mode with 100 Pa setpoint.

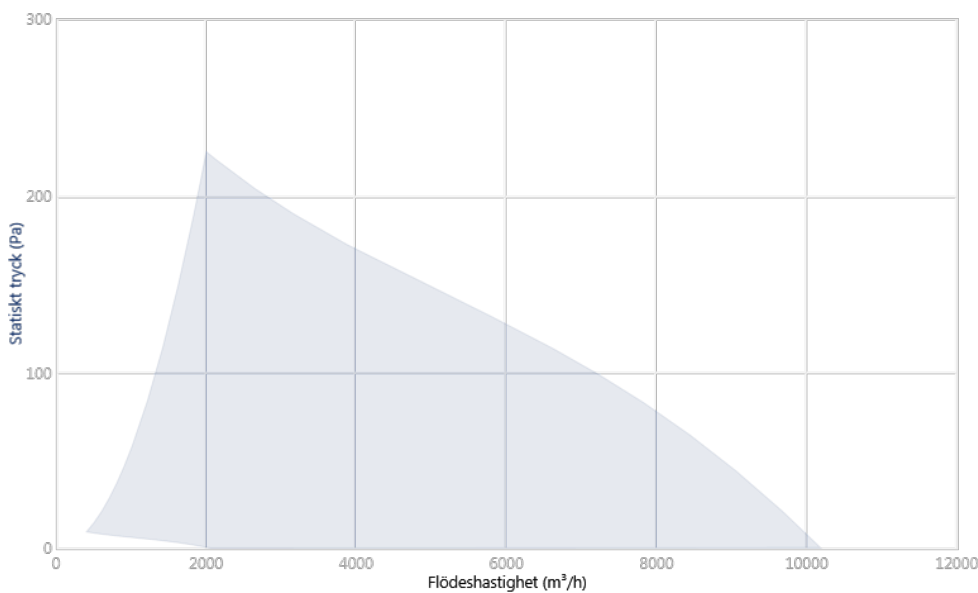
Finishing:

- Anti-corrosive finish in polyester resin, polymerised at 190 °C, after degreasing with phosphate-free nanotechnology treatment.

On request:

- Airflow direction from impeller to motor.
- Motor, impeller and grille assembly (version F), except model 71 supplied without grill.
- Motor, impeller assembly, version G.

KARAKTÄRISTISK KURVA OCH AKUSTIK VID 1,2KG/M³

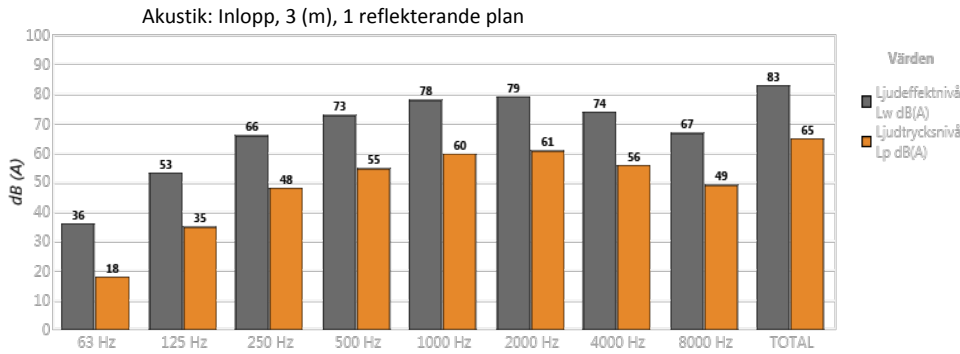


Dimensionerande Punkt

Q (m ³ /h)	
Ps (Pa)	

Servicepunkt (SP)

Q (m ³ /h)	-
Ps (Pa)	-
Pd (Pa)	-
Pt (Pa)	-



Band	Lw dB(A)	Lp dB(A)
63 Hz	36	18
125 Hz	53	35
250 Hz	66	48
500 Hz	73	55
1000 Hz	78	60
2000 Hz	79	61
4000 Hz	74	56
8000 Hz	67	49
TOTAL	83	65

TEKNISKA EGENSKAPER

Luftflöde maximalt (m ³ /h)	10185
Varvtal (rpm)	1410
Maximalt statiskt tryck (Pa)	224,5
Maximalt totaltryck (Pa)	228,9

ERP

Effektivitet	38,8%
Effektivitetsklass N	52,1
Mätkategori	A
Effektivitetskategori	Statisk
Specifikt förhållande	1,00
Flödes hastighet (m ³ /h)	5349

Tryck (Pa)	140
Ingångseffekt (kW)	0,539
Varvtal (rpm)	1410
Frekvensomvandlare	VSD inbyggd i fläkten
ErP-efterlevnad	In accordance with the ErP 2020 draft

- Uppgifter som fastställts vid optimal effektivitet

MOTORDATA

Max. Elektrisk kraft (kW)	0,55
Hz / faser	50/1
Motor VSD Max. (rpm)	1410
Motor VSD Min. (rpm)	285
Stolpar	4P
Max. ström (A) 220-277 V	5
Motorskydd	IP55

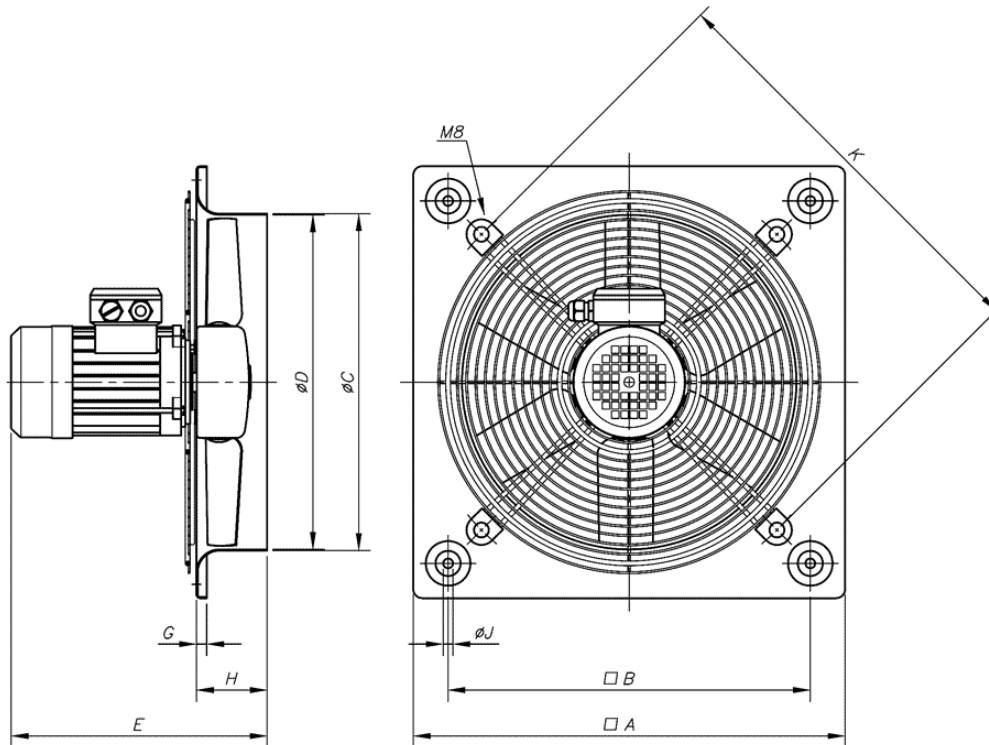
Data kan ändras, kontrollera motorplåten

MÅTT

A	B	ØC	ØD	E	G	H	ØJ	K
665	562	516,5	514	356,5	11	105	10,5	640

Mått utan uttryckligen definierade enheter visas i millimeter (mm). Mått beroende på motor är ungefärliga

Ungefärlig vikt (kg)	18
----------------------	----



TILLGÄNGLIGA TILLBEHÖR

Inga tillgängliga tillbehör.

HC/EC-56-4M-1.5 IE5



Väggmonterade axialfläktar med EC Teknologi IE5-motor

Wall mounted axial fans with EC Technology IE5 motor with integrated electronics, specially designed for high energy efficiency.



Fan:

- Airflow direction from motor to impeller.
- Fibreglass reinforced polyamide-6 impeller.
- Steel sheet support frame.
- Protection grid against contacts according to UNE-EN ISO 12499.
- Model 71 the protection grid is supplied as an accessory.



Motor:

- High efficiency EC Technology motors with integrated electronics, regulated by 0-10V or 4-20mA.
- IE5 efficiency motors, class F and IP55 protection.
- Single-phase 230 V 50/60 Hz.
- Working temperature: -20 °C +60 °C.

EC CONTROL:

Supplied as an optional accessory. Control panel for ventilation systems with EC Technology motors that have electronics incorporated in the motor itself. With the following characteristics:

- CPC: Constant pressure control.
- CFC: Constant flow control.
- DAY / NIGHT: Double pressure setpoint adjustment according to time of day.
- External sensor: compatible with temperature, humidity, air quality or CO sensor.
- Equipment preconfigured in constant pressure mode with 100 Pa setpoint.

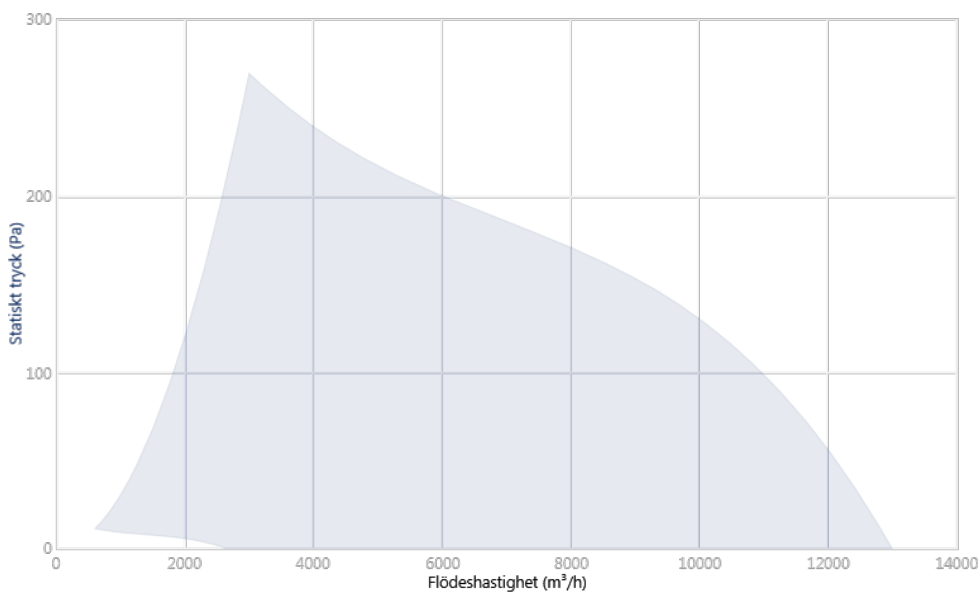
Finishing:

- Anti-corrosive finish in polyester resin, polymerised at 190 °C, after degreasing with phosphate-free nanotechnology treatment.

On request:

- Airflow direction from impeller to motor.
- Motor, impeller and grille assembly (version F), except model 71 supplied without grill.
- Motor, impeller assembly, version G.

KARAKTÄRISTISK KURVA OCH AKUSTIK VID 1,2KG/M³

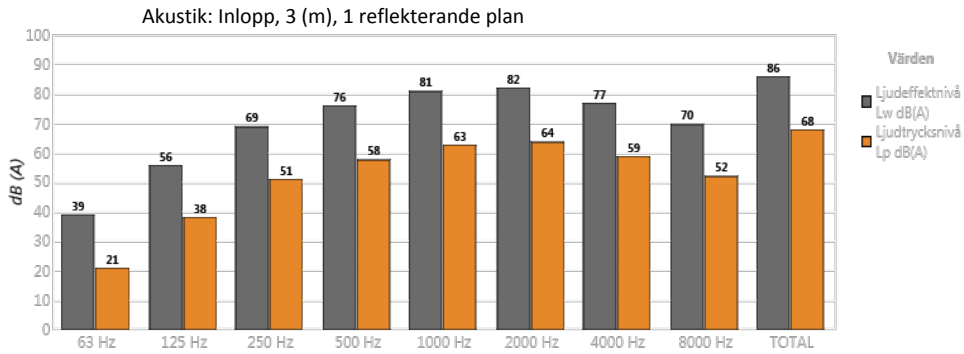


Dimensionerande Punkt

Q (m³/h)	
Ps (Pa)	

Servicepunkt (SP)

Q (m³/h)	-
Ps (Pa)	-
Pd (Pa)	-
Pt (Pa)	-



Band	Lw dB(A)	Lp dB(A)
63 Hz	39	21
125 Hz	56	38
250 Hz	69	51
500 Hz	76	58
1000 Hz	81	63
2000 Hz	82	64
4000 Hz	77	59
8000 Hz	70	52
TOTAL	86	68

TEKNISKA EGENSKAPER

Luftflöde maximalt (m ³ /h)	12985
Varvtal (rpm)	1410
Maximalt statiskt tryck (Pa)	268,9
Maximalt totaltryck (Pa)	275,8

ERP

Effektivitet	41,8%
Effektivitetsklass N	52,7
Mätkategori	A
Effektivitetskategori	Statisk
Specifikt förhållande	1,00
Flödes hastighet (m ³ /h)	8350

Tryck (Pa)	164
Ingångseffekt (kW)	0,914
Varvtal (rpm)	1410
Frekvensomvandlare	VSD inbyggd i fläkten
ErP-efterlevnad	In accordance with the ErP 2020 draft

- Uppgifter som fastställts vid optimal effektivitet

MOTORDATA

Max. Elektrisk kraft (kW)	1,1
Hz / faser	50/1
Motor VSD Max. (rpm)	1410
Motor VSD Min. (rpm)	285
Stolpar	4P
Max. ström (A) 220-277 V	9
Motorskydd	IP55

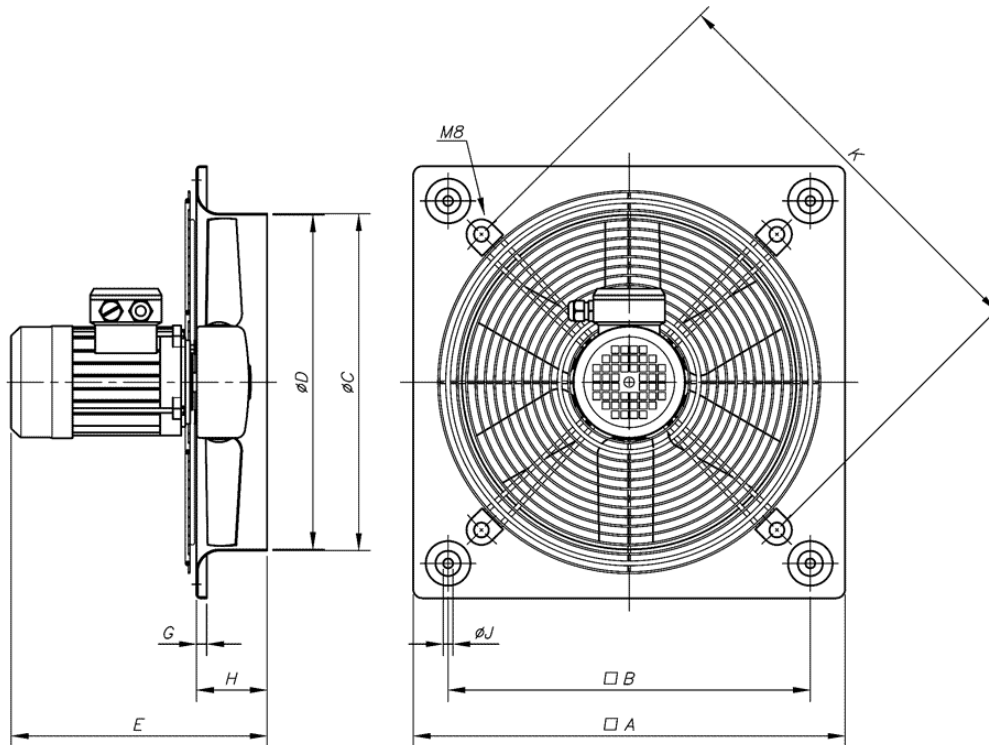
Data kan ändras, kontrollera motorplåten

MÅTT

A	B	ØC	ØD	E	G	H	ØJ	K
710	630	563	560	377,5	15	115	10,5	721

Mått utan uttryckligen definierade enheter visas i millimeter (mm). Mått beroende på motor är ungefärliga

Ungefärlig vikt (kg)	28
----------------------	----



TILLGÄNGLIGA TILLBEHÖR

Inga tillgängliga tillbehör.

HC/EC-63-4M-1.5 IE5



Väggmonterade axialfläktar med EC Teknologi IE5-motor

Wall mounted axial fans with EC Technology IE5 motor with integrated electronics, specially designed for high energy efficiency.



Fan:

- Airflow direction from motor to impeller.
- Fibreglass reinforced polyamide-6 impeller.
- Steel sheet support frame.
- Protection grid against contacts according to UNE-EN ISO 12499.
- Model 71 the protection grid is supplied as an accessory.



Motor:

- High efficiency EC Technology motors with integrated electronics, regulated by 0-10V or 4-20mA.
- IE5 efficiency motors, class F and IP55 protection.
- Single-phase 230 V 50/60 Hz.
- Working temperature: -20 °C +60 °C.

EC CONTROL:

Supplied as an optional accessory. Control panel for ventilation systems with EC Technology motors that have electronics incorporated in the motor itself. With the following characteristics:

- CPC: Constant pressure control.
- CFC: Constant flow control.
- DAY / NIGHT: Double pressure setpoint adjustment according to time of day.
- External sensor: compatible with temperature, humidity, air quality or CO sensor.
- Equipment preconfigured in constant pressure mode with 100 Pa setpoint.

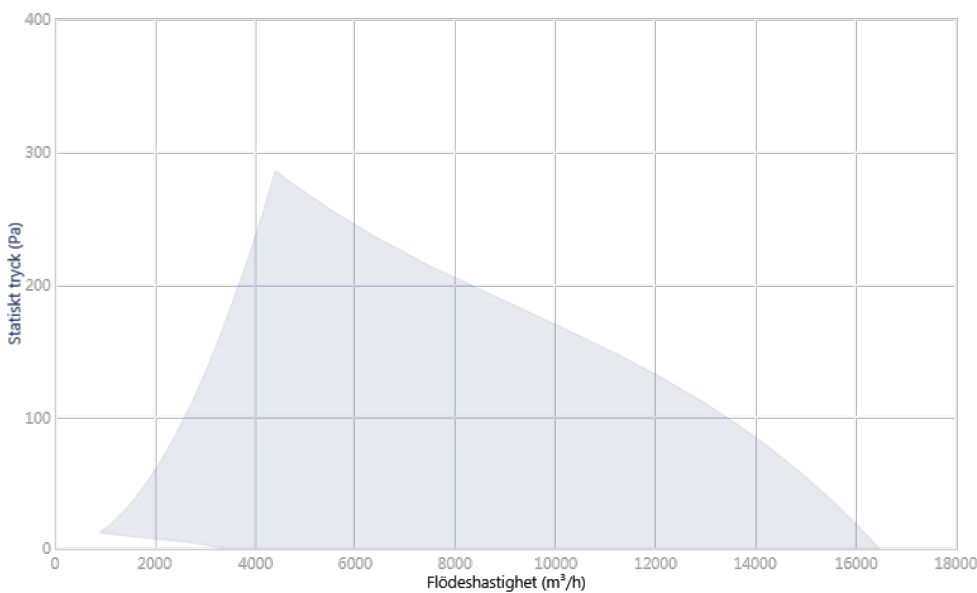
Finishing:

- Anti-corrosive finish in polyester resin, polymerised at 190 °C, after degreasing with phosphate-free nanotechnology treatment.

On request:

- Airflow direction from impeller to motor.
- Motor, impeller and grille assembly (version F), except model 71 supplied without grill.
- Motor, impeller assembly, version G.

KARAKTÄRISTISK KURVA OCH AKUSTIK VID 1,2KG/M³

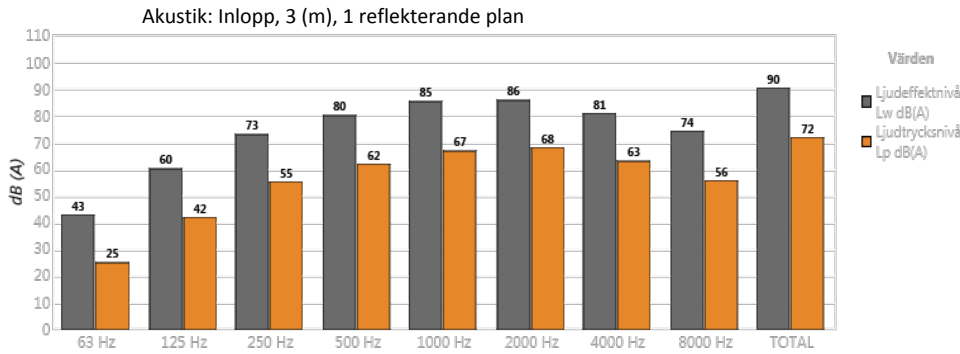


Dimensionerande Punkt

Q (m³/h)	
Ps (Pa)	

Servicepunkt (SP)

Q (m³/h)	-
Ps (Pa)	-
Pd (Pa)	-
Pt (Pa)	-



Band	Lw dB(A)	Lp dB(A)
63 Hz	43	25
125 Hz	60	42
250 Hz	73	55
500 Hz	80	62
1000 Hz	85	67
2000 Hz	86	68
4000 Hz	81	63
8000 Hz	74	56
TOTAL	90	72

TEKNISKA EGENSKAPER

Luftflöde maximalt (m ³ /h)	16455
Varvtal (rpm)	1410
Maximalt statiskt tryck (Pa)	285
Maximalt totaltryck (Pa)	294

ERP

Effektivitet	47,2%
Effektivitetsklass N	57,8
Mätkategori	A
Effektivitetskategori	Statisk
Specifikt förhållande	1,00
Flödes hastighet (m ³ /h)	9340

Tryck (Pa)	179
Ingångseffekt (kW)	0,989
Varvtal (rpm)	1410
Frekvensomvandlare	VSD inbyggd i fläkten
ErP-efterlevnad	In accordance with the ErP 2020 draft

- Uppgifter som fastställts vid optimal effektivitet

MOTORDATA

Max. Elektrisk kraft (kW)	1,1
Hz / faser	50/1
Motor VSD Max. (rpm)	1410
Motor VSD Min. (rpm)	285
Stolpar	4P
Max. ström (A) 220-277 V	9
Motorskydd	IP55

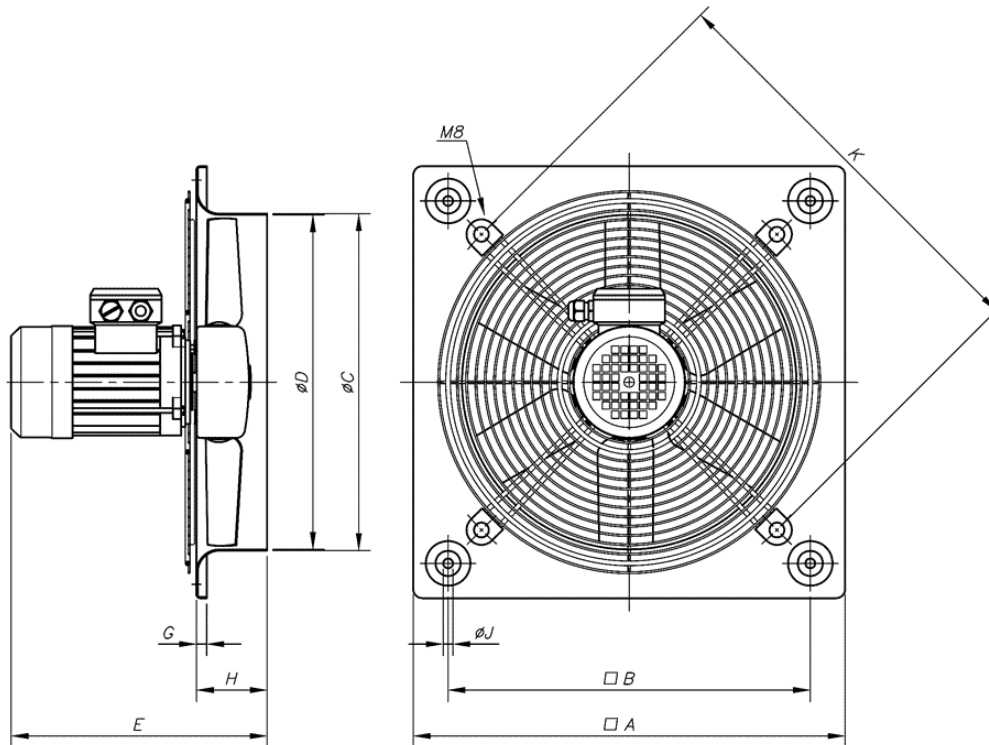
Data kan ändras, kontrollera motorplåten

MÅTT

A	B	ØC	ØD	E	G	H	ØJ	K
800	710	638	635	401	15	140	10,5	820

Mått utan uttryckligen definierade enheter visas i millimeter (mm). Mått beroende på motor är ungefärliga

Ungefärlig vikt (kg)	30
----------------------	----



TILLGÄNGLIGA TILLBEHÖR

Inga tillgängliga tillbehör.

HC/EC-71-6M-1 IE5



Väggmonterade axialfläktar med EC Teknologi IE5-motor

Wall mounted axial fans with EC Technology IE5 motor with integrated electronics, specially designed for high energy efficiency.



Fan:

- Airflow direction from motor to impeller.
- Fibreglass reinforced polyamide-6 impeller.
- Steel sheet support frame.
- Protection grid against contacts according to UNE-EN ISO 12499.
- Model 71 the protection grid is supplied as an accessory.



Motor:

- High efficiency EC Technology motors with integrated electronics, regulated by 0-10V or 4-20mA.
- IE5 efficiency motors, class F and IP55 protection.
- Single-phase 230 V 50/60 Hz.
- Working temperature: -20 °C +60 °C.

EC CONTROL:

Supplied as an optional accessory. Control panel for ventilation systems with EC Technology motors that have electronics incorporated in the motor itself. With the following characteristics:

- CPC: Constant pressure control.
- CFC: Constant flow control.
- DAY / NIGHT: Double pressure setpoint adjustment according to time of day.
- External sensor: compatible with temperature, humidity, air quality or CO sensor.
- Equipment preconfigured in constant pressure mode with 100 Pa setpoint.

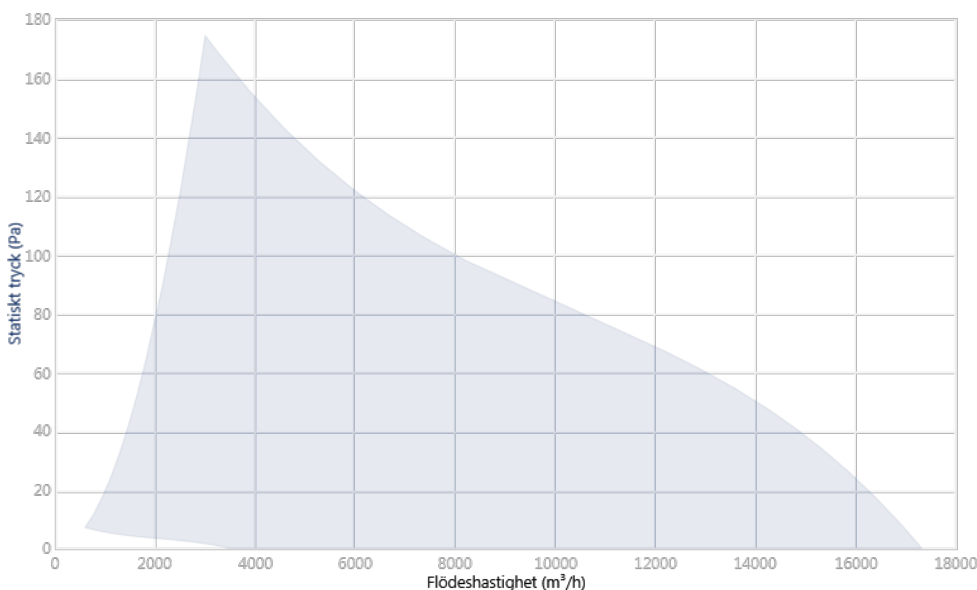
Finishing:

- Anti-corrosive finish in polyester resin, polymerised at 190 °C, after degreasing with phosphate-free nanotechnology treatment.

On request:

- Airflow direction from impeller to motor.
- Motor, impeller and grille assembly (version F), except model 71 supplied without grill.
- Motor, impeller assembly, version G.

KARAKTÄRISTISK KURVA OCH AKUSTIK VID 1,2KG/M³

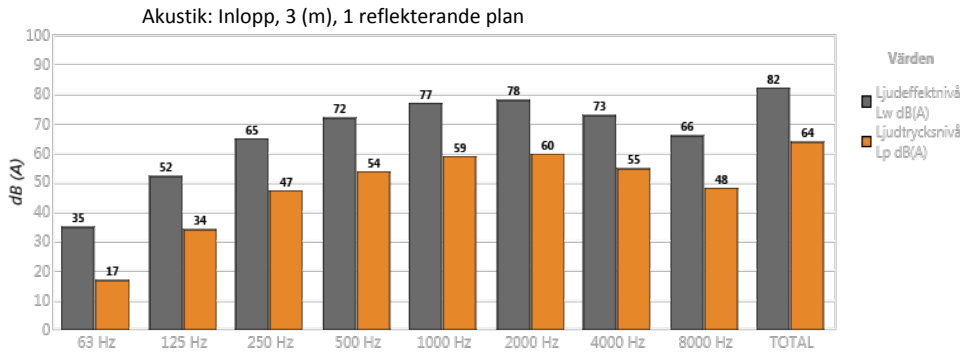


Dimensionerande Punkt

Q (m³/h)	
Ps (Pa)	

Servicepunkt (SP)

Q (m³/h)	-
Ps (Pa)	-
Pd (Pa)	-
Pt (Pa)	-



Band	Lw dB(A)	Lp dB(A)
63 Hz	35	17
125 Hz	52	34
250 Hz	65	47
500 Hz	72	54
1000 Hz	77	59
2000 Hz	78	60
4000 Hz	73	55
8000 Hz	66	48
TOTAL	82	64

TEKNISKA EGENSKAPER

Luftflöde maximalt (m ³ /h)	17324
Varvtal (rpm)	900
Maximalt statiskt tryck (Pa)	174,1
Maximalt totaltryck (Pa)	176,8

ERP

Effektivitet	40,3%
Effektivitetsklass N	53,4
Mätkategori	A
Effektivitetskategori	Statisk
Specifikt förhållande	1,00
Flödes hastighet (m ³ /h)	9630

Tryck (Pa)	86
Ingångseffekt (kW)	0,572
Varvtal (rpm)	1410
Frekvensomvandlare	VSD inbyggd i fläkten
ErP-efterlevnad	In accordance with the ErP 2020 draft

- Uppgifter som fastställts vid optimal effektivitet

MOTORDATA

Max. Elektrisk kraft (kW)	0,66
Hz / faser	50/1
Motor VSD Max. (rpm)	900
Motor VSD Min. (rpm)	180
Stolpar	4P
Max. ström (A) 220-277 V	6
Motorskydd	IP55

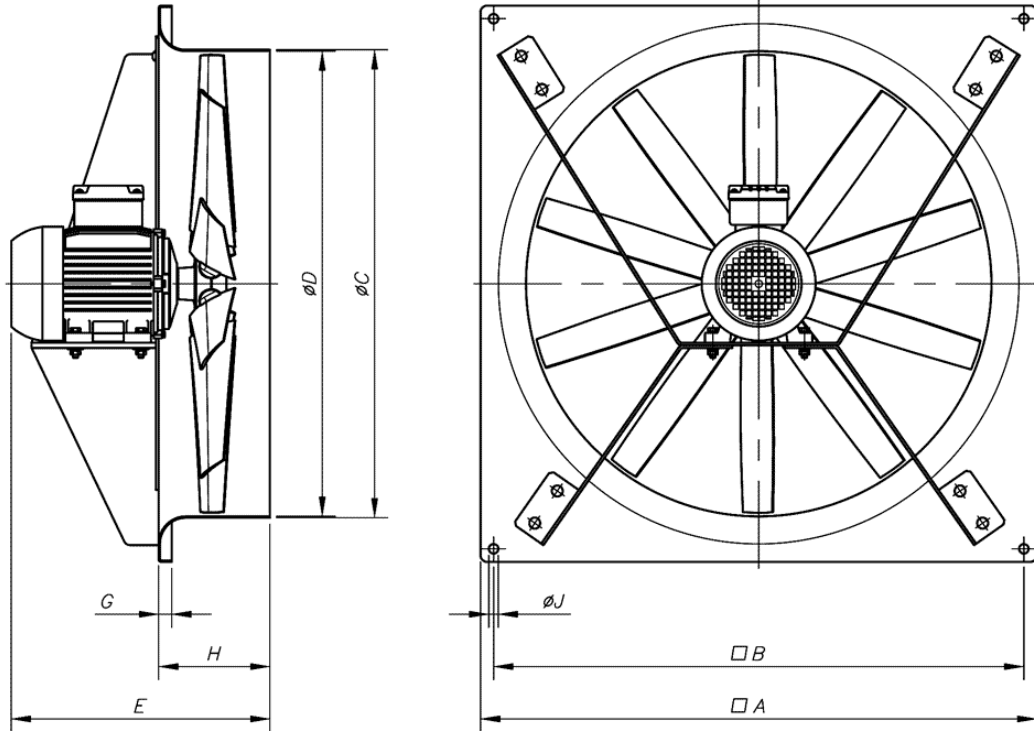
Data kan ändras, kontrollera motorplåten

MÅTT

A	B	ØC	ØD	E	G	H	ØJ
850	810	715	711	405	20	170	14,5

Mått utan uttryckligen definierade enheter visas i millimeter (mm). Mått beroende på motor är ungefärliga

Ungefärlig vikt (kg)	39
----------------------	----



TILLGÄNGLIGA TILLBEHÖR

Inga tillgängliga tillbehör.