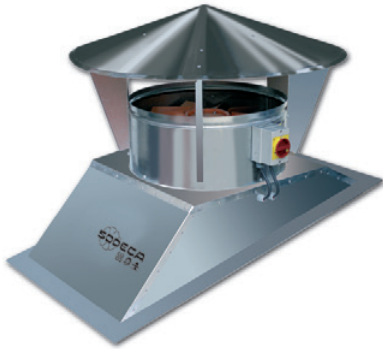


# HTTI



## Roof-mounted axial extract fans with inclined supports



Roof-mounted axial extract fans adapted to the roof inclination, with built-in safety switch.

**Fan:**

- Galvanised sheet steel support base.
- Fibreglass-reinforced polyamide-6 impellers.
- Rain cap
- Airflow direction from motor to impeller.

**Motor:**

- IE3 efficiency motors for powers equal to or higher than 0.75kW except single-phase, 2-speed and 8-pole.
- Class F motors with ball bearings and IP55 protection.

- Three-phase 230/400V-50Hz (up to 4kW) and 400/690V-50Hz (powers higher than 4kW).
- Maximum temperature of air to be carried: -25°C +60°C.

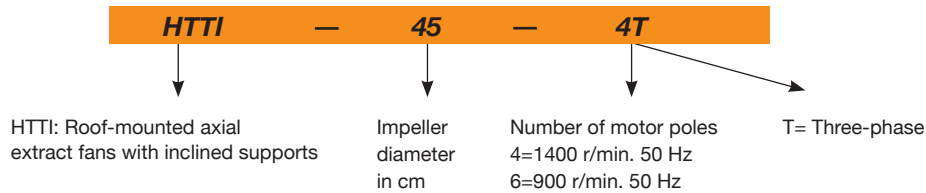
**Finish:**

- Anti-corrosive finish on galvanised sheet steel.

**On request:**

- All the required base inclinations and measurements (max. length 2m)
- Made of stainless sheet steel plate.
- Special windings for different voltages
- ATEX-certified Category 2.

### Order code



### Technical characteristics

Model	Speed (r/min)	Maximum admissible current (A)			Installed power (kW)	Maximum flow rate (m³/h)	Sound pressure level dB(A)	Approx. weight (kg)	According to ErP
		230 V	400 V	690 V					
HTTI-50-4T	1380	2.92	1.69		0.55	9200	69	56	2015
HTTI-56-4T IE3	1455	4.07	2.34		1.10	11700	72	68	2015
HTTI-71-4T IE3	1440	5.41	3.11		1.50	18900	78	90	2015
HTTI-71-6T	900	2.99	1.73		0.55	13500	67	79	2015
HTTI-80-4T IE3	1440	10.70	6.15		3.00	33300	83	119	2015
HTTI-80-6T IE3	945	4.68	2.69		1.10	23400	72	109	2015
HTTI-90-4T IE3	1450	13.90	8.00		4.00	41850	89	139	2015
HTTI-90-6T IE3	950	6.43	3.70		1.50	30870	77	133	2015
HTTI-100-4T IE3	1465		13.90	8.06	7.50	56700	93	197	2015
HTTI-100-6T IE3	950	9.08	5.22		2.20	34200	82	154	2015



### Erp. (Energy Related Products)

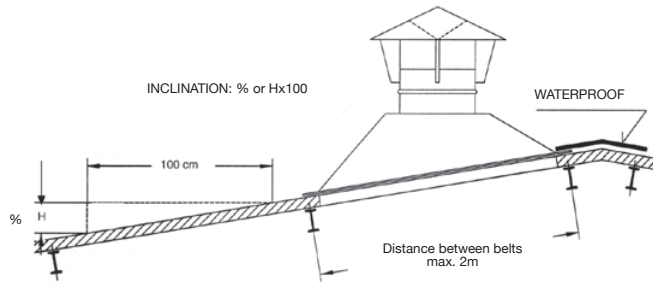
Information on Directive 2009/125/EC can be downloaded from the SODECA website or the QuickFan selector programme.

### Accessories

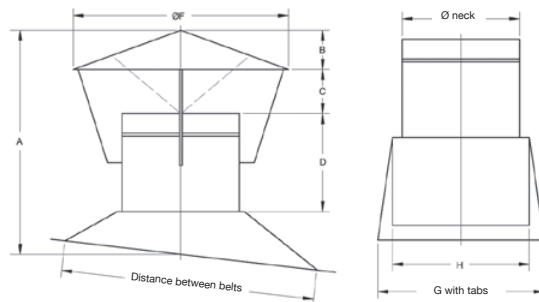
See accessories section.



**Dimensions mm**



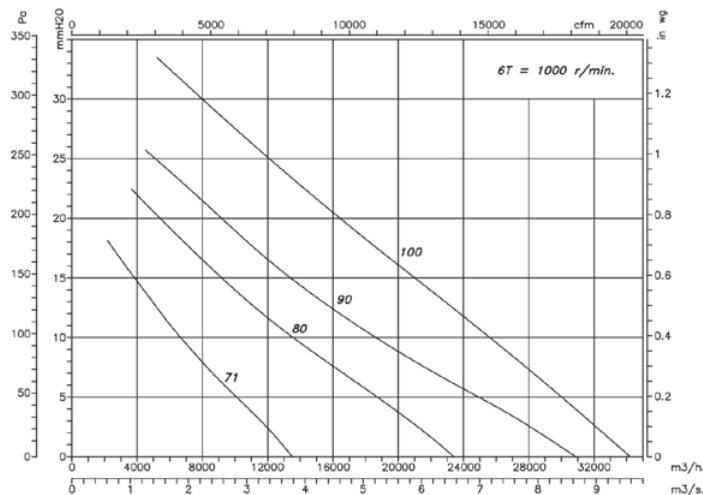
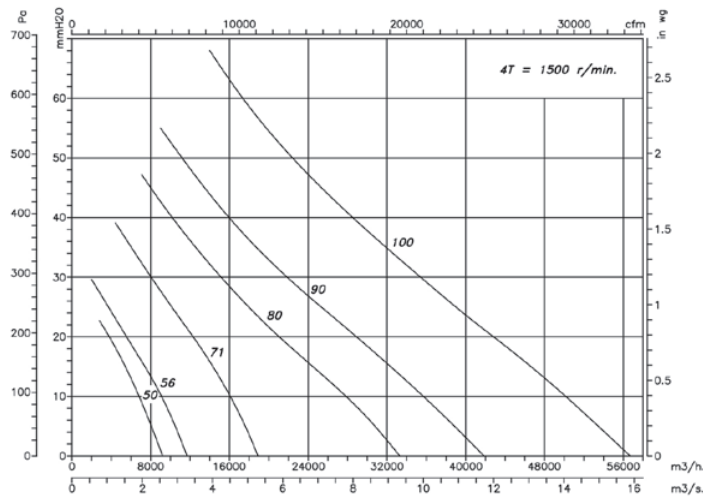
Model	A	B	C	D	ØF	G	H	ØI
HTTI-50-4T	800	150	200	250	950	780	570	520
HTTI-56-4T	800	150	200	250	1050	830	620	570
HTTI-71-4T	900	200	230	300	1250	990	780	730
HTTI-71-6T	900	200	230	300	1250	990	780	730
HTTI-80-4T	1100	250	310	330	1400	1080	870	820
HTTI-80-6T	1100	250	310	330	1400	1080	870	820
HTTI-90-4T	1150	300	310	330	1500	1080	970	920
HTTI-90-6T	1150	300	310	330	1500	1080	970	920
HTTI-100-4T	1200	350	310	330	1600	1280	1070	1020
HTTI-100-6T	1200	350	310	330	1600	1280	1070	1020



**Characteristic curves**

Q= Flow rate in m<sup>3</sup>/h, m<sup>3</sup>/s and cfm.

Pe= Static pressure in mm H<sub>2</sub>O, Pa and inwg.



According to Regulation EU No 327/2011 of the European Commission, implementing Directive 2009/125/CE of European Parliament  
Apply to fans

SODECA, S.L.U.

www.sodeca.com

**ERP: Performance at the best efficiency point (BEP)**

<b>MC</b>	Measurement category
<b>EC</b>	Efficiency category
<b>VSD</b>	Variable Speed Drive
<b>SR</b>	Specific ratio

<b>[m<sup>3</sup>/h]</b>	Flowrate
<b>[Pa]</b>	Static pressure / Total pressure
<b>[RPM]</b>	Speed

<b>ηe [%]</b>	Efficiency
<b>N</b>	Efficiency grade
<b>[kW]</b>	Input power

Model	MC	EC	VSD	SR	ηe[%]	N	[kW]	[m <sup>3</sup> /h]	[Pa]	[RPM]
HTTI-50-4T	A	Static	VSD not necessary	1.00	32.4	40.2	0.590	3719	185	1415
HTTI-56-4T IE3	A	Static	VSD not necessary	1.00	34.7	41.4	0.897	5852	192	1469
HTTI-71-4T IE3	C	Static	VSD not necessary	1.00	48.0	53.3	1.467	10660	238	1449
HTTI-71-6T	C	Static	VSD not necessary	1.00	35.7	43.0	0.710	8036	114	913
HTTI-80-4T IE3	C	Static	VSD not necessary	1.00	55.3	58.5	3.176	19442	325	1449
HTTI-80-6T IE3	C	Static	VSD not necessary	1.00	48.5	54.1	1.329	15312	152	946
HTTI-90-4T IE3	C	Static	VSD not necessary	1.00	57.5	59.9	4.213	24635	354	1444
HTTI-90-6T IE3	C	Static	VSD not necessary	1.00	52.8	57.7	1.716	18106	180	957
HTTI-100-4T IE3	C	Static	VSD not necessary	1.00	48.9	52.9	2.380	23849	176	959
HTTI-100-6T IE3	C	Static	VSD not necessary	1.00	49.0	53.0	2.373	23849	176	959